



CLIVEPEARCE
Now you're moving

3 Bedrooms

House - Semi-Detached

Asking Price

£359,950

Located in

Truro

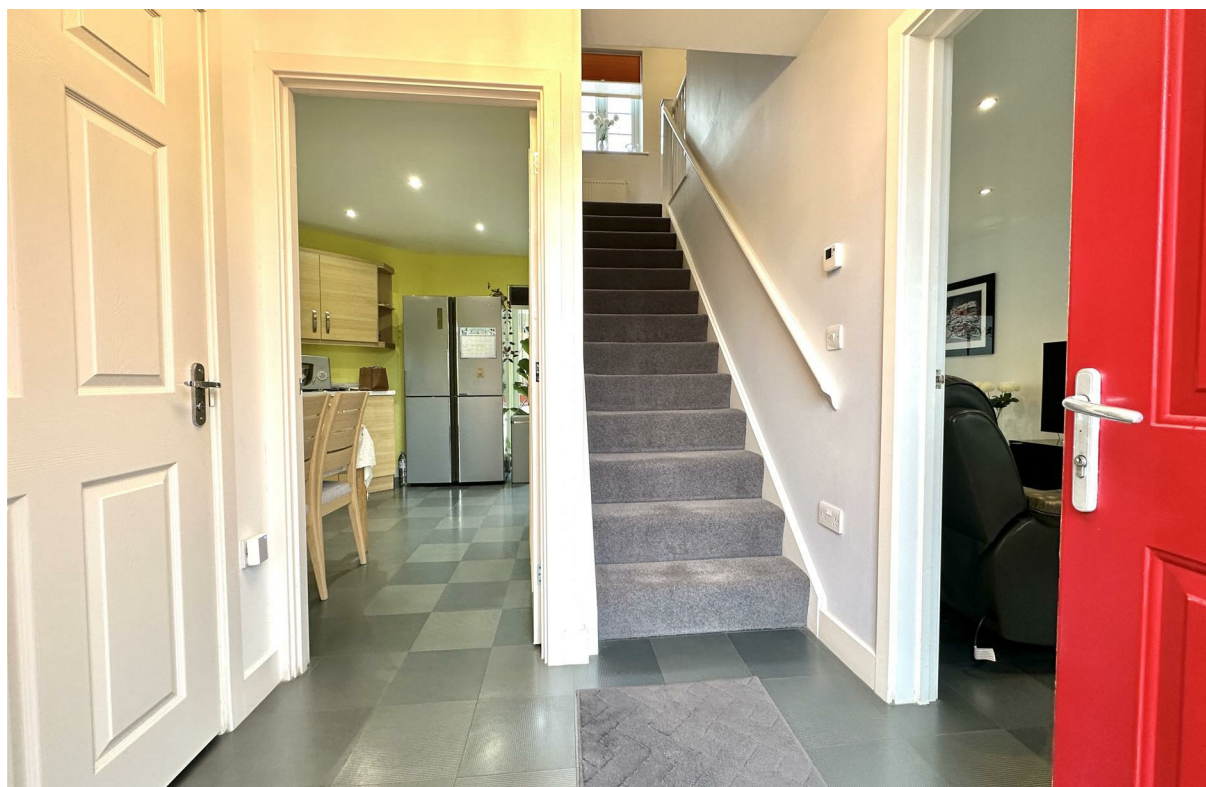


www.clivepearceproperty.com



Wheal Sperries Way

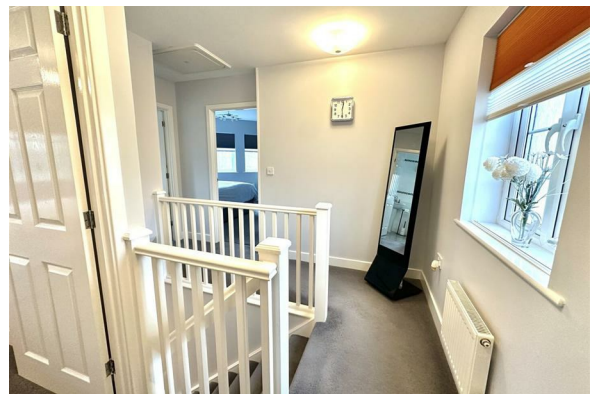
Truro | | TR1 3FE



This superb three bedroom family home is ideally located and has much to offer. CHAIN FREE.

Wheal Sperries Way

£359,950 Freehold



- Double Fronted Family Home
- Three Bedrooms with wardrobes
- Through Living Room, Patio Door To Garden
- Gas Central Heating & Double Glazing
- Landscaped Low Maintenance Garden
- No Onward Chain
- Beautifully Presented
- Fitted Kitchen
- Garage & Driveway

Council Tax Band C

Local Authority

Agents Note: Whilst every care has been taken to prepare these particulars, they are for guidance purposes only. All measurements are approximate and are for general guidance purposes only and whilst every care has been taken to ensure their accuracy, they should not be relied upon and potential buyers/tenants are advised to recheck the measurements.

Energy Efficiency Rating		
	Current	Potential
Very energy efficient - lower running costs		
(92 plus) A		
(81-91) B		
(69-80) C	79	84
(55-68) D		
(39-54) E		
(21-38) F		
(1-20) G		
Not energy efficient - higher running costs		
England & Wales		EU Directive 2002/91/EC

31 Lemon Street
Truro
Cornwall
TR1 2LS



CLIVEPEARCE
Now you're moving

hello@clivepearceproperty.com

01872 272622

www.clivepearceproperty.com